

Early Help and Children Social Care

Concerns regarding vulnerable children and young people

If you have a concern about a child or family, you have a responsibility to offer advice and support to them in full. You can do this in conjunction with other providers, and support the family to access all services available to them.

Next steps:

1. Talk to the child/family.
2. Talk to the designated Safeguarding professional in your own agency.
3. Discuss with colleagues/partner agencies who know the family.
4. Consider undertaking a holistic assessment, e.g. Early Help Assessment and an Early Help Plan to provide identified support.

Talk to your local Children First Hub (manager details overleaf) or Integrated Front Door (IFD) if your concerns persist and you identify:

- Concerns about the child development or behaviour change
- Deterioration in appearance/self-harming
- Suspicion of neglect/poor parenting
- Signs that parent not coping/chaotic home life/ mental health issues
- Housing conditions present a risk to the child/family
- Domestic violence where a child was present but not injured or likely to have been
- Reduction in school attendance/welfare concerns arising from low attendance
- Low level crime/anti-social behaviour/child out at night
- 2 or more unexplained missed medical appointments
- Child/family substance use.

Refer to Children Social Care
Concerns when Children Social Care referral may be appropriate:

- Sudden unexplained injury to child
- Several minor injuries reoccurring
- Disclosure of abuse
- Young person becomes homeless
- Domestic violence when children are involved
- Young child home alone or unattended
- When continuous intervention by other agencies is not effective
- Unexplained sudden deterioration of health where advice is not being sought
- Any other safeguarding concerns.

The following documents can help you in making decisions

This leaflet is in support of the Wakefield Continuum.

Continuum of Need Strategy and Practitioners Guide www.wakefieldscb.org.uk/professionals-and-practitioners/early-help-strategy/

Guidance & examples of child focused risk assessments including the Neglect toolkit www.wakefieldscb.org.uk/professionals-and-practitioners/neglect-strategy/

Training is offered through Wakefield Safeguarding Children's Board www.wakefieldscb.org.uk/trainingcourses/

(Available to everyone working with children/young people)

Contact us

For more information, general questions or to make a referral, please use the contact details below for each Children First Hub:

Mid Wakefield

Helen Challenger Team Manager
☎ 01924 307878
✉ cfhmidwakefield@wakefield.gov.uk

North East

Karen Wilkinson Team Manager
☎ 01977 724350
✉ cfhnortheast@wakefield.gov.uk

South East

Dave Taylor Team Manager
☎ 01977 722305
✉ cfhsoutheast@wakefield.gov.uk

Wakefield West

Jennifer Smith Team Manager
☎ 01924 303272
✉ cfhwakefieldwest@wakefield.gov.uk

Children Social Care

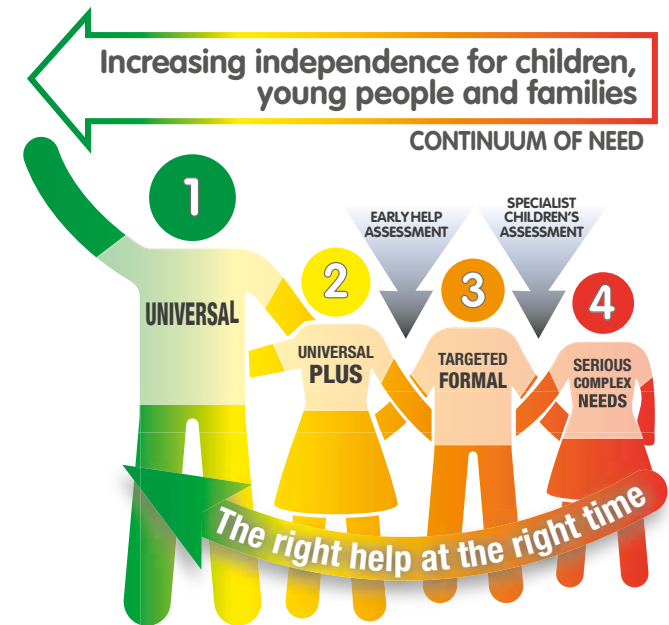
for Statutory Social Care referrals
☎ 0345 8 503 503

Safeguarding is everyone's business


Wakefield District


**Wakefield & District
safeguarding
children board**

Early Help and Safeguarding



213738 Designed and produced by Wakefield Council, Communications 04/19 

Information to help Practitioners in decision making about the right help, right time support for children and young people


Wakefield Together
WAKEFIELD DISTRICT PARTNERSHIP